

Welcome!

Welcome to Nelson Livestock Company's 2010 Bull Sale.

We look forward to seeing and visiting with you as we are getting ready for our 35th year of selling registered seedstock at our February 14th sale. One of the rewards of the seedstock business is meeting and working with all the good people associated with the cattle business. We thank you all for the good friendships. We are striving to raise the best, no nonsense genetics available. Our predictable seedstock is run on grass and long hay and are mostly calved outside and run much like commercial cattle and are efficient forage converters. We use performance selection, EPD's, visual appraisal, indexes and percentile ranking to raise and develop the best genetics available with optimum reproduction, optimum production, and optimum product.

The bulls were weaned off grass in September across the fence from their mothers for a week and then were trailed with horses five miles home. They were developed on Purina Accuration and long alfalfa-grass hay and mineral. The bulls ran in small pastures and they got lots of exercise. This probably lowers gain but should create more athletic bulls with longevity.

We would like to thank all the people that have helped us and worked with us throughout the year. We would like to give Les and Yolanda Craft, our partner in our Angus program, special thanks for their help and support. Thanks also to Jay Temchack for the great clipping job, Jason McLennan for the ultrasound, Terry Hall, DVM, for help with the health program, and Pat and Steve Thoeny from J&S Feed.

The coffee pot is always on and we are always available to visit about our breeding program and maybe even politics!

Thanks!

The Nelsons

All bulls selling are guaranteed OS, AM and NH free. Any animals with potential to be a carrier by pedigree have been DNA tested to be free of these defects.

Check out our web site at www.nelsonlivestockco.com for more information, photos, and updates!

SUNDAY, FEBRUARY 14, 2010

1:00 PM MST AT THE RANCH

22 MILES SOUTH OF WIBAUX • 22 MILES NORTH OF BAKER

Lunch will be served at noon.

Auctioneer: Joe Goggins

Sale Day Phones:

Land Lines-they work all the time

406-588-3371 (house & barn)

406-588-3939 (barn)

Cell Lines-they may or may not work

406-480-5957 Tom-cell

406-989-0499 Brent-cell

Sale Consultants:

Jeff Thomas-Prairie Star406-581-8859

Jerry Gliko.....406-656-2515

Marty Ropp-ASA Rep.....406-581-7835

John Goggins406-698-4159

Motels in Wibaux, MT

Beaver Creek Inn and Suites.....406-796-2666

Motels in Baker, MT

Montana Motel406-778-3315

Sagebrush Inn406-778-3341

Lakefront Bed and Breakfast406-778-2727

GENERAL INFORMATION

Terms and Conditions: They will be the same as those recommended by the American Simmental Association and the American Angus Association. If you have any questions, contact us. The seller will be responsible for no more than the purchase price.

Registration Papers: Registration papers will be transferred. Animals will become your responsibility after the sale. Insurance will be available sale day.

Liabilities: We are not responsible for any accidents, damaged or stolen items the day of the sale.

Ultrasound Data and Yearling Weight:

Bulls will be ultrasounded, testicles measured, and yearling data will be available a week before the sale. This data will be on the web site or you can call us. The hip height was done in December 2009 and will be done again for an average if the weather permits.

Contact us by February 13, 2010 if you want to be on a conference call sale day.

Feeding Arrangements: Bulls selling for more than \$1500 will be fed at no charge until April 1, 2010. All bulls will be delivered free up to 300 miles. The bulls will be semen tested before delivery. For delivery on bulls over 300 miles, Nelson Livestock Co will guarantee trucking not to exceed \$250/head in the continental USA, if arranged by Nelson Livestock Company. Bulls will be delivered in April. If the bulls are picked up sale day, deduct \$100.00. *If bulls are not picked up sale day, we recommend that you insure your bull. They become your property when they are sold.*

Semen Interest: Nelson Livestock Company reserves the right of 50% semen interest on any bull sold in the sale. The buyer will get 100% of the walking rights and salvage value and 50% of the semen rights. If the buyer desires to have 100% of the semen rights, he may double the purchase price the day of the sale and assume 100% of the semen rights.

Health Program: Nelson Livestock Co uses a comprehensive vaccination and health monitoring program. The bulls are guaranteed BVD-PI negative and can be tested before delivery if requested by the buyer.

ANY ANNOUNCEMENTS SALE DAY TAKE PRECEDENCE OVER PRINTED MATTER.

HOW TO READ THE CATALOG LAYOUT~ To provide you with more information.
 More information on the bulls for you, the customer, has resulted in a new catalog format.
 We hope you find this information beneficial and the new layout user friendly.

LOT NUMBER	NAME	REG NUMBER	BREED
LOT 3	72W	9653892	PUREBRED SIMMENTAL

Sire: Name of the sire Actual Birth Wt

Dam: Dam's registered name

Maternal Sires: Maternal sires on the dam side

#Calves/Weaning Ratio: Dam's weaning index based on natural calves

56T	CE	BW	WW	YW	MCE	Milk	MWW	STAY	CW	YG	MARB	BF	REA	API	TI	FS	ADG
DATA:	88	755	0														
RATIOS	103	117	0														
EPD'S:	-1.2	40.4	75.0		3.8	24.0		5.30	0.07	0.23	0.04	0.17	119.7	75.2			

DATA: This line contains the data on the individual animal, the adjusted birth weight, weaning weight, and yearling weight, frame score and the average daily gain on a 95 day test for the bulls.

RATIOS: This line shows how the individual animal ratioed **within his contemporary group** for all traits measured.

EPD'S EXPECTED PROGENY DIFFERENCE

- CE Calving Ease EPD-Expressed in %, the HIGHER the number, the better the bull's calving ease.
- BW Birthweight EPD-Expressed in pounds, the LOWER the number, the lighter the bull's calves will be.
- WW Weaning Weight EPD-Expressed in pounds, the HIGHER the WW number, the more pounds weaned.
- YW Yearling Weight EPD-Like BW and WW, the HIGHER the YW number, the more pounds at yearling
- MCE Maternal Calving Ease EPD-Predicts calving ease of bull's daughters. HIGHER number is better.
- Milk Milk EPD-Expressed as pounds of calf weaned by bull's daughters. Available feed resources will dictate to an extent how much milking ability should be selected.
- MWW Maternal Weaning Weight EPD- Measures the differences in pounds of calf weaned by a bulls daughters.
- STAY Stayability-Percent of daughters remaining in the cowherd at 6 years of age.
- CW Carcass Weight-estimates the average differences in carcass weight in pounds.
- YG Yield Grade-Yield grade score
- MARB Marbling score
- BF Inches of back fat
- REA Square inches of ribeye
- API All Purpose Index-Dollars per cow exposed under an all purpose scenario. If you are keeping females, use API
- TI Terminal Index-Evaluated sire for use on mature Angus cows with all offspring put on feed and sold grade & yield
- FS Frame Score was calculated from an age/height formula from measurement taken on January 10, 2010.
- ASC Adjusted Scrotal, in cm, is a projected yearling scrotal measurement. Bulls will be semen tested.
- ADG Average Daily Gain-calculated on a 101 day feed test for the bulls.
- WDA Weight Per Day of Age-Final test weight divided by age in days of bull

WINTERING AND WARRANTY

Along with the first year breeding guarantee that is explained below we stand behind the bulls with the following warranty. All bulls selling will be wintered at Nelson Livestock Company. We will semen test and soundness exam around the first of April. At this time if there are any problems, you will be notified and a replacement will be offered or a refund will be made available. Delivery will start the first part of April. All bulls held later will be charged feed costs not to exceed \$2/day. Feel free to inspect the bulls at any time at Nelson Livestock Company.

FIRST BREEDING YEAR GUARANTEE

All bulls selling for \$2,000. or more will be covered 50% by Nelson Livestock Company if they are injured during their first breeding season and not able to return to service during that first breeding season. Breeding season is defined as the 90 day period following the first turnout of the bulls. 50% of the value of the injured bull, minus one-half salvage value, will be given as credit in a future sale or toward a replacement bull if one is available. Salvage value, if any, will be split equally between Nelson Livestock Company and the buyer. All injured bulls must be diagnosed by a veterinarian. Please notify us as soon as possible should injury occur and prior to the injured bull being sold for salvage. All claims must be made by September 1, 2010.

Example 1: A \$5,000 bull is injured, a credit of \$2500 minus one-half of salvage value will be given to the buyer.

Example 2: A \$2,000 bull is injured, a credit of \$1000 minus one-half of salvage value will be given to the buyer.

Example 3: A \$1,750 bull is injured, no credit is given. Buyer retains all salvage value.

REFERENCE SIRES

NELSON LIVESTOCK COMPANY HERD SIRES

AMERICAN SIMMENTAL ASSOCIATION SPRING 2010 EPD'S

		ASA															
Name	%	Number	CE	BW	WW	YW	MCE	MM	MWW	STAY	CW	YG	MB	BF	REA	API	TI
<u>SIMMENTALS</u>																	
NLC MALTA L132M	PB	2169124	17.7	-2	30	58	-7.2	-6.5	8.5	18.5	-5.6	0.04	0.35	0.06	0.24	135	70
BF M218 SNAKE EYES	PB	2199652	12	-0.5	39	73	5.4	2.9	22.4	24.3	5.4	-0.1	-0	0.06	0.93	121	66
NLC FORTUNATE SON 100N	PB	2227155	9.6	0.1	25	51	-1.8	12	24	18.2	-6.6	0.07	0.28	0.03	-0	114	64
NLC PAYDIRT 39P	PB	2265583	15.9	-1.3	30	61	-3.5	0.9	15.9	17.7	-2.7	0.35	0.52	0.11	-0.3	138	73
PUREBRED BREED AVERAGE			7	1.1	31	55.9	2.7	4.4	20	17.7	-2.6	-0	0.13	0.01	0.11	102	61
NLC STETSON 36S	3/4 SM 1/4 AN	2373351		-0.5	46	81		-1.2	22		9.9	0.01	0.37	0.06	0.54	127	81
NLC WHO ARE YA 162R	1/2SM 1/2AR	2325010		-1.9	24	57		1.4	13.3		-5.6	0.23	0.33	0.08	-0.2	107	63
NLC PAYDAY 16P	3/4 SM 1/4 AN	2265563		-1.1	51	95		0.7	26.4		17	0.35	0.26	0.09	-0.2	124	83
BREED AVE. HYBRID				-0.4	26	50.7		3.6	16.6		-6.2	0.1	0.3	0.0	0.0	104	62

RED ANGUS

ASA NUMBER

ASA EPD'S

LJC MISSION STATEMENT P27	PB	2364364		1.2	24	8.5		0.5	12.5		11	0.14	0.67	0.07	0.27	104	68
---------------------------	----	---------	--	-----	----	-----	--	-----	------	--	----	------	------	------	------	-----	----

AMERICAN ANGUS ASSOCIATION SPRING 2009 VALUES

		ASA															
			CE	BW	WW	YW	CEM	MILK	%IMF	RE	\$F	\$G	\$B				
H S A F BANDO 1961	PB	13896250	2	2.4	55	97	7	27	0.032	0.09	34.24	13.56	42.92				
MED ROCK EMBLAZON 702 707	PB	16158753	6	0.9	43	81	3	22	0.019	0.25	23.00	26.03	38.62				
TRINITY RITO I12 6314	PB	15508443	2	3.3	59	101	2	26	0.006	0.03	36.75	32.25	53.47				
MYTTY IN FOCUS	PB	13880818	14	-1.3	54	100	12	25	0.026	0	37.71	30.05	44.40				
WOODHILL MAINLINE	PB	14793708	8	-1	60	111	7	14	0.062	0.75	46.82	15.21	52.70				
BREED AVERAGE			5	2.1	43	79	6	21	0.28	0.13	21.75	20.12	38.13				

Black Purebred & 3/4 Simmental Bulls

Lot 1		NLC 4W				9653850				PB SM									
Sire:		NLC STETSON 36S				Birth Date: 2/24/2009				Black									
Dam:		NLC TARSHA T139				Actual Birth Weight: 73				Polled									
Maternal Sires: MSR SURE BET 5506R x ER BLACK BEAR 604D																			
# of Calves/Weaning Ratio: 1/103																			
Comments: He is a moderate framed bull with lots of thickness. He should produce some great females. His dam has a progeny weaning wt ratio of 103. He tested homozygous black and homozygous polled.																			
4W	CE	BW	WW	YW	MCE	Milk	MWW	STAY	CW	YG	Marb	BF	REA	API	TI	FS	SC	ADG	WDA
DATA		80	661													4.4	38.9	2.98	2.89
RATIOS		112	103																
EPD'S		-1.4	32.3	59.2		4	20.1		-4.4	-0.03	0.3	0.04	0.36	119.8	71.7				

Lot 2		NLC 47W				9653877				PB SM									
Sire:		NLC STETSON 36S				Birth Date: 3/18/2009				Black									
Dam:		NLC LL246 LANA				Actual Birth Weight: 108				Polled									
Maternal Sires: GW LUCKY BREAK 047G x NLC GOOD A NUFF 33G																			
# of Calves/Weaning Ratio: 7/105																			
Comments: Thick and meaty with great carcass potential. Use on mature cows. His dam has a weaning wt progeny ratio of 105 on 7 calves. He tested homozygous polled and heterozygous black.																			
47W	CE	BW	WW	YW	MCE	Milk	MWW	STAY	CW	YG	Marb	BF	REA	API	TI	FS	SC	ADG	WDA
DATA		107	742													5.5	36.6	2.85	3.43
RATIOS		82	109																
EPD'S		2.4	44.1	78.2		0.1	22.2		12.4	0.02	0.23	0.02	0.25	101.8	69.1				

Lot 3		NLC 72W				9653892				PB SM									
Sire:		NLC STETSON 36S				Birth Date: 3/22/2009				Black									
Dam:		NLC K7551 KAVALINE				Actual Birth Weight: 88				Polled									
Maternal Sires: NLC GOTHIC 31G x SRS FORTUNE 500																			
# of Calves/Weaning Ratio: 8/105																			
Comments: A herd bull prospect that puts it all together. He tested homozygous black and homozygous polled.																			
72W	CE	BW	WW	YW	MCE	Milk	MWW	STAY	CW	YG	Marb	BF	REA	API	TI	FS	SC	ADG	WDA
DATA		88	755													5.5	38.9	3.13	3.57
RATIOS		103	117																
EPD'S		-1.2	40.4	75		3.8	24		5.3	0.07	0.23	0.04	0.17	119.7	75.2				

Lot 4 NLC 99W 9653909 PB SM																			
Sire: NLC STETSON 36S					Birth Date: 3/30/2009					Black									
Dam: NLC MIRIAM ML095					Actual Birth Weight: 86					Polled									
Maternal Sires: SRS FORTUNE 500 x ER BIG SKY 545B																			
# of Calves/Weaning Ratio: 6/105																			
Comments: Another good Stetson son out of a good Fortune 500 cow. He tested homozygous black and homozygous polled.																			
99W	CE	BW	WW	YW	MCE	Milk	MWW	STAY	CW	YG	Marb	BF	REA	API	TI	FS	SC	ADG	WDA
DATA		85	692													5.4	39.5	2.8	3.29
RATIOS		106	107																
EPD'S	-1.1	38.6	65.6		4.3	23.6		-0.4	0.03	0.27	0.04	0.2	120.2	74.2					

Lot 5 NLC 101W 9653910 PB SM																			
Sire: NLC STETSON 36S					Birth Date: 3/31/2009					Black									
Dam: LRS MS MAVERICK 281M					Actual Birth Weight: 93					Polled									
Maternal Sires: LRS MAVERICK 30G x CIRCLE S LEACHMAN 600U																			
# of Calves/Weaning Ratio: 6/98																			
Comments: He is black, thick and good.																			
101W	CE	BW	WW	YW	MCE	Milk	MWW	STAY	CW	YG	Marb	BF	REA	API	TI	FS	SC	ADG	WDA
DATA		92	651													5.7	36.3	2.02	2.88
RATIOS		98	101																
EPD'S	0.3	37.7	61.6		-1.2	17.6		-0.8	0.02	0.32	0.03	0.16	113.7	71.4					

Lot 6 NLC 104W 9653912 PB SM																			
Sire: NLC STETSON 36S					Birth Date: 4/1/2009					Black									
Dam: NLC N106 NITA					Actual Birth Weight: 93					Polled									
Maternal Sires: PCC NIGHT MOVES H10 x ER BLACK BEAR 604D																			
# of Calves/Weaning Ratio: 5/105																			
Comments: You won't find them any deeper bodied or thicker than this one.																			
104W	CE	BW	WW	YW	MCE	Milk	MWW	STAY	CW	YG	Marb	BF	REA	API	TI	FS	SC	ADG	WDA
DATA		93	724													4.7	31.9	1.73	3.01
RATIOS		97	112																
EPD'S	0	44.1	77.5		-0.1	22		8.4	-0.01	0.23	0.02	0.3	116.4	75.2					

Lot 7 NLC 16W 9653862 PB SM																			
Sire: CNS DREAM ON L186					Birth Date: 3/5/2009					Black									
Dam: NLC TOSIA T163					Actual Birth Weight: 79					Polled									
Maternal Sires: NLC MALTA L132M x GW BRIGHT LIGHT 019H																			
# of Calves/Weaning Ratio: 1/103																			
Comments: He has built in calving ease and will produce great females.																			
16W	CE	BW	WW	YW	MCE	Milk	MWW	STAY	CW	YG	Marb	BF	REA	API	TI	FS	SC	ADG	WDA
DATA		86	666													4.3	32.9	1.98	2.57
RATIOS		105	103																
EPD'S	12.4	-1.3	31.2	50.8	4.5	-0.6	15	19.5	-9.5	-0.03	0.41	0.03	0.2	131.5	71.6				

Lot 8 NLC 181W 2517311 3/4 SM 1/4 AN																			
Sire: HILLS BOY D-10 MM726					Birth Date: 3/16/2009					Black									
Dam: NLC N61					Actual Birth Weight: 77					Polled									
Maternal Sires: CONNEALY KC 5029 x NLC GRANITE 123G																			
# of Calves/Weaning Ratio: 5/99																			
Comments: Stout and good. Out of a good Connealy KC dam.																			
181W	CE	BW	WW	YW	MCE	Milk	MWW	STAY	CW	YG	Marb	BF	REA	API	TI	FS	SC	ADG	WDA
DATA		76	701													5.7	38.5	2.79	3.28
RATIOS		110	100																
EPD'S		-0.5	31.2	53.3		-0.4	15.2		-6.7	-0.01	0.19	0.03	0.13	108	64				

Lot 9 NLC 183W 2517312 PB SM																			
Sire: HILLS BOY D-10 MM726					Birth Date: 3/19/2009					Black									
Dam: NLC N212 NYDIA					Actual Birth Weight: 87					Polled									
Maternal Sires: NLC LINUS L358L x LEACHMAN RED KAT 275A																			
# of Calves/Weaning Ratio: 5/100																			
Comments: This bull is powerful and full of performance.																			
183W	CE	BW	WW	YW	MCE	Milk	MWW	STAY	CW	YG	Marb	BF	REA	API	TI	FS	SC	ADG	WDA
DATA		87	750													5.7	37.2	2.13	3.23
RATIOS		97	107																
EPD'S	6.4	2.3	44.9	73.7	2.1	-4.5	18	16.1	9.3	-0.03	0.09		0.22	97	65				

Lot 10 NLC 185W 2517313 3/4 SM 1/4 AN																			
Sire: HILLS BOY D-10 MM726					Birth Date: 3/21/2009					Black									
Dam: NLC MORELLA MG145					Actual Birth Weight: 77					Polled									
Maternal Sires: BASIN TRAVELER 823K x NLC GOOD A NUFF 33G																			
# of Calves/Weaning Ratio: 6/101																			
Comments: 185W is a little bigger framed with lots of performance.																			
185W	CE	BW	WW	YW	MCE	Milk	MWW	STAY	CW	YG	Marb	BF	REA	API	TI	FS	SC	ADG	WDA
DATA		76	745													6.5	39.3	3.17	3.58
RATIOS		110	106																
EPD'S		0	37	68.4		-0.3	18.2		3.2	0	0.17	0.03	0.22	109	68				

Lot 11 NLC 187W 2517315 PB SM																			
Sire: HILLS BOY D-10 MM726					Birth Date: 3/27/2009					Black									
Dam: NLC N132 NARION					Actual Birth Weight: 79					Polled									
Maternal Sires: SRS FORTUNE 500 x NLC 64Y TOMCAT																			
# of Calves/Weaning Ratio: 5/97																			
Comments: 187W will sire those good northern plains feeder cattle that are in great demand.																			
187W	CE	BW	WW	YW	MCE	Milk	MWW	STAY	CW	YG	Marb	BF	REA	API	TI	FS	SC	ADG	WDA
DATA		79	718													6.1	38.1	2.33	3.19
RATIOS		107	103																
EPD'S	6.8	1.4	34.5	59.9	3.6	-0.8	16.5	19	0.1	-0.08	0.05	0	0.2	100	60				

Lot 12 NLC 45W 9653875 PB SM																			
Sire: BF M218 SNAKE EYES					Birth Date: 3/18/2009					Black									
Dam: NLC S110 SARONA					Actual Birth Weight: 86					Polled									
Maternal Sires: NLC MALTA L132M x ALBERDA TRAVELER 416																			
# of Calves/Weaning Ratio: 2/91																			
Comments: 45W's indexes for API and TI are in the top 10% of the breed.																			
45W	CE	BW	WW	YW	MCE	Milk	MWW	STAY	CW	YG	Marb	BF	REA	API	TI	FS	SC	ADG	WDA
DATA		89	621													4.7	36.6	3.56	3.14
RATIOS		102	96																
EPD'S	10.7	-1.1	32.8	65.3	0.7	-1.1	15.3	16.8	0	0.1	0.32	0.08	0.32	120.8	69.9				

Lot 13 NLC 73W 9653893 PB SM																			
Sire: BF M218 SNAKE EYES					Birth Date: 3/22/2009					Black									
Dam: NLC S85 SZELLY					Actual Birth Weight: 92					Polled									
Maternal Sires: NLC MALTA L132M x GW LUCKY SEVEN 604K																			
# of Calves/Weaning Ratio: 2-97																			
Comments: Calving ease, growth plus rib eye potential in this calf.																			
73W	CE	BW	WW	YW	MCE	Milk	MWW	STAY	CW	YG	Marb	BF	REA	API	TI	FS	SC	ADG	WDA
DATA		96	626													4.6	35.4	2.79	2.89
RATIOS		94	97																
EPD'S	10.7	0.4	30.4	56.7	0.7	0.8	16	21.4	-3.1	-0.11	0.07	0.02	0.45	112.9	61.3				

Lot 14 NLC 134W 9653950 PB SM																			
Sire: BF M218 SNAKE EYES					Birth Date: 4/9/2009					Black									
Dam: NLC LL280 LEIGH					Actual Birth Weight: 83					Polled									
Maternal Sires: SRS FORTUNE 500 x NLC BLACK BANDIT 50B																			
# of Calves/Weaning Ratio: 7/105																			
Comments: The dam of 134W is a consistently good producer who has raised 7 calves with a 104 weaning wt ratio.																			
134W	CE	BW	WW	YW	MCE	Milk	MWW	STAY	CW	YG	Marb	BF	REA	API	TI	FS	SC	ADG	WDA
DATA		83	622													5.6	35.3	2.9	3.1
RATIOS		108	97																
EPD'S	8.8	-0.9	25.6	44.5	2.5	6.6	19.4	22.3	-12.4	-0.08	0.04	0.03	0.32	109.8	59				

Lot 15 NLC 149W 9653939 PB SM																			
Sire: BF M218 SNAKE EYES					Birth Date: 4/25/2009					Black									
Dam: NLC R130 RILANA					Actual Birth Weight: 78					Polled									
Maternal Sires: BF M218 SNAKE EYES x SRS FORTUNE 500																			
# of Calves/Weaning Ratio: 3/108																			
Comments: A linebred mating that is good. His dam has a progeny weaning wt ratio of 108, a yearling ratio of 116, and a REA ratio of 103.																			
149W	CE	BW	WW	YW	MCE	Milk	MWW	STAY	CW	YG	Marb	BF	REA	API	TI	FS	SC	ADG	WDA
DATA		80	697													5.1	33.8	2.99	3.35
RATIOS		112	115																
EPD'S	9.2	-2.1	37.9	71.5	3.9	6.8	25.7	25.7	2	-0.08	0.02	0.05	0.65	124.8	68.1				

Lot 16 NLC 137W 9653931 PB SM																			
Sire: MLC/FGS BLACK SOLUTIONS					Birth Date: 4/14/2009					Black									
Dam: NLC N102 NONNI					Actual Birth Weight: 98					Polled									
Maternal Sires: NLC LCC ROCKY ROAD 7366K x TAYLORS BLACK YIPPIE																			
# of Calves/Weaning Ratio: 5/105																			
Comments: This young Preferred Beef grandson is full of thickness and meat. A herd bull prospect.																			
137W	CE	BW	WW	YW	MCE	Milk	MWW	STAY	CW	YG	Marb	BF	REA	API	TI	FS	SC	ADG	WDA
DATA		98	697													5.7	34.6	3.31	3.5
RATIOS		92	108																
EPD'S	5.9	2.1	34.9	64.5	0	9.5	26.9	20.6	4.1	-0.02	0.08	0.02	0.28	104	61.9				

Lot 17 NLC 143W 9653935 PB SM																			
Sire: MLC/FGS BLACK SOLUTIONS					Birth Date: 4/21/2009					Black									
Dam: NLC MENORA ML145					Actual Birth Weight: 85					Polled									
Maternal Sires: LCHMN HARD CORE 7019G x SRS FORTUNE 500																			
# of Calves/Weaning Ratio: 6/111																			
Comments: This young calf is thick and good. His dam, M73, has a progeny weaning wt ratio of 111 on 6 calves, a yearling wt ratio of 108 on 4, and a RE ratio of 110 on 2 calves. He tested homozygous black and homozygous polled.																			
143W	CE	BW	WW	YW	MCE	Milk	MWW	STAY	CW	YG	Marb	BF	REA	API	TI	FS	SC	ADG	WDA
DATA		85	748													6	42.7	3.32	3.71
RATIOS		106	116																
EPD'S	5	0.3	36	70.4	1.3	13	31	22.9	5.1	-0.05	0.11	0.03	0.44	113.8	66				

Lot 18 NLC 186W 2517314 PB SM																			
Sire: NLC PAYDIRT 39P					Birth Date: 3/25/2009					Black									
Dam: NLC N128 NILDA					Actual Birth Weight: 80					Polled									
Maternal Sires: NICHOLS LEGACY G151 x BDV BLACK CYCLONE 2C																			
# of Calves/Weaning Ratio: 5/99																			
Comments: 186W's sire, NLC Paydirt 39P, is a high marbling and shear force tenderness leader.																			
186W	CE	BW	WW	YW	MCE	Milk	MWW	STAY	CW	YG	Marb	BF	REA	API	TI	FS	SC	ADG	WDA
DATA		80	704													5.9	37.5	3.23	3.4
RATIOS		106	101																
EPD'S	11.4	-1.1	32.6	58.7	-0.1	0.8	17.1	20.5	-4.3	0.19	0.35	0.06	-0.16	128	69				

Lot 19 NLC 188W 2517316 3/4 SM 1/4 AN																			
Sire: NLC PAYDIRT 39P					Birth Date: 3/27/2009					Black									
Dam: NLC MOCHILA MG130					Actual Birth Weight: 80					Polled									
Maternal Sires: CONNEALY KC 5029 x SRS FORTUNE 500																			
# of Calves/Weaning Ratio: 7/103																			
Comments: A nice 3/4 bull that is well balanced in all the good traits.																			
188W	CE	BW	WW	YW	MCE	Milk	MWW	STAY	CW	YG	Marb	BF	REA	API	TI	FS	SC	ADG	WDA
DATA		79	715													5.6	38.4	2.29	3.22
RATIOS		107	102																
EPD'S		-1.2	33.2	63.5		2.4	19		-1.4	0.25	0.41	0.09	-0.13	120	73				

Lot 20 NLC 53W 9653881 PB SM																			
Sire: NLC FORTUNATE SON 100N					Birth Date: 3/19/2009					Black									
Dam: NLC S44 SAURA					Actual Birth Weight: 95					Polled									
Maternal Sires: HILLS BOY D-10 MM 726 x LCC PAPA FORTE H154L																			
# of Calves/Weaning Ratio: 2/108																			
Comments: 53W starts out a nice group of NLC Fortunate Son 100N sons. Fortunate Son is standing at stud at ORigen and carries his tremendous thickness and body depth. He should be homozygous black by pedigree.																			
53W	CE	BW	WW	YW	MCE	Milk	MWW	STAY	CW	YG	Marb	BF	REA	API	TI	FS	SC	ADG	WDA
DATA		98	665													4.5	37.7	3.15	3.15
RATIOS		92	103																
EPD'S	6.8	1.4	26.9	52.2	0.6	6.9	20.3	13	-4.1	-0.02	0.23	0.02	0.17	96.2	61.5				

Lot 21 NLC 66W 9653887 PB SM																			
Sire: NLC FORTUNATE SON 100N					Birth Date: 3/20/2009					Black									
Dam: NLC R10 RAMONA					Actual Birth Weight: 92					Polled									
Maternal Sires: BF M218 SNAKE EYES x LCC PAPA FORTE H154L																			
# of Calves/Weaning Ratio: 3/95																			
Comments: Thick and good. His dam, R10, has a yearling wt ratio of 103 and an IMF ratio of 106.																			
66W	CE	BW	WW	YW	MCE	Milk	MWW	STAY	CW	YG	Marb	BF	REA	API	TI	FS	SC	ADG	WDA
DATA		93	623													4.6	33.7	3.11	3.07
RATIOS		97	97																
EPD'S	8.1	0.3	28.6	58.7	0.3	7.1	21.4	15.2	-1.7	0.06	0.19	0.05	0.19	103.1	63				

Lot 22 NLC 69W 9653889 PB SM																			
Sire: NLC FORTUNATE SON 100N					Birth Date: 3/21/2009					Black									
Dam: NLC MELODY ML128					Actual Birth Weight: 105					Polled									
Maternal Sires: LCHMN NLC ANUFF 7447J x NLC FAST TRACK 120F																			
# of Calves/Weaning Ratio: 6/109																			
Comments: 69W's dam, M78, has a weaning wt ratio of 109 on 6 calves, yearling wt ratio of 109 on 4 calves, IMF ratio of 102 on 4 calves, REA ratio of 105 on 4 calves. Use him on mature cows. He tested homozygous black and homozygous polled.																			
69W	CE	BW	WW	YW	MCE	Milk	MWW	STAY	CW	YG	Marb	BF	REA	API	TI	FS	SC	ADG	WDA
DATA		105	732													5	40.8	3.35	3.55
RATIOS		84	108																
EPD'S	7.2	1.6	34.3	66.6	-1.5	11.1	28.2	21.3	4.7	0.09	0.13	0.03	0.02	110.4	63.4				

Lot 23 NLC 247U 2481267 PB SM																			
Sire: NLC FORTUNATE SON 100N					Birth Date: 9/14/2008					Black									
Dam: NLC MARIBEL MLO68					Actual Birth Weight: 89					Polled									
Maternal Sires: GW LUCKY SEVEN 604K x BS MR ARAPAHOE 811A																			
# of Calves/Weaning Ratio:																			
Comments: A good fall yearling that will cover a lot of cows.																			
247U	CE	BW	WW	YW	MCE	Milk	MWW	STAY	CW	YG	Marb	BF	REA	API	TI	FS	SC	ADG	WDA
DATA		89	563													6	40.5*	2.6	2.69
RATIOS		91	99																
EPD'S	6.8	2.1	30.1	54.8	-0.1	9	24	19.5	-1.7	0.02	0.19	0.02	0.07	106.4	61.5				

Red Purebred & 3/4 Simmental Bulls

Lot 24 NLC 11W 9653856 PB SM																			
Sire: HILLS LONG CUT T65					Birth Date: 3/2/2009					Red									
Dam: NLC TILLY T78					Actual Birth Weight: 98					Polled									
Maternal Sires: WS BEEF MAKER R13 x NLC LENNOX L330L																			
# of Calves/Weaning Ratio: 1/100																			
Comments: Powerful and good. Use on mature cows.																			
11W	CE	BW	WW	YW	MCE	Milk	MWW	STAY	CW	YG	Marb	BF	REA	API	TI	FS	SC	ADG	WDA
DATA		105	643													5	37.8	2.69	2.73
RATIOS		84	100																
EPD'S	5.7	2.7	38.6	60	1.5	6.4	25.7	16.9	1.7	-0.04	0.18	0	0.16	100.4	64.9				

Lot 25 NLC 82W 9653900 PB SM																			
Sire: WS BEEF MAKER R13					Birth Date: 3/24/2009					Red									
Dam: NLC J58 JOVA					Actual Birth Weight: 94					Polled									
Maternal Sires: ER RED E538 x 3C PASQUE 6768 RIS																			
# of Calves/Weaning Ratio: 9/103																			
Comments: 82W is well balanced with good performance out of the ABS bull Beefmaker. He tested heterozygous polled.																			
82W	CE	BW	WW	YW	MCE	Milk	MWW	STAY	CW	YG	Marb	BF	REA	API	TI	FS	SC	ADG	WDA
DATA		94	710													5.3	38	2.61	3.2
RATIOS		96	110																
EPD'S	10.2	0.2	43.3	69.1	-1.7	10.1	31.7	20.9	3.3	0.02	0.15	0.03	0.22	119	71.1				

Lot 26 NLC 85W 9653901 PB SM																			
Sire: HILLS LONG CUT T65					Birth Date: 3/25/2009					Red									
Dam: NLC P122 PEEKABOO					Actual Birth Weight: 98					Polled									
Maternal Sires: NLC LENNOX L330L x ER HERCS IMAGE 608X																			
# of Calves/Weaning Ratio: 4-98																			
Comments: Length and muscle. Use on mature cows. He tested homozygous polled.																			
85W	CE	BW	WW	YW	MCE	Milk	MWW	STAY	CW	YG	Marb	BF	REA	API	TI	FS	SC	ADG	WDA
DATA		99	720													6.3	38.3	2.97	3.38
RATIOS		91	112																
EPD'S	5.1	2.4	41.9	62.7	4.8	4.4	25.4	16	2.6	0	0.11	-0.02	-0.11	95.1	64.8				

Lot 27 NLC 97W 9653908 PB SM																			
Sire: HILLS LONG CUT T65					Birth Date: 3/28/2009					Red									
Dam: NLC MOLLY ML123					Actual Birth Weight: 98					Polled									
Maternal Sires: HOOKS SHEAR FORCE 38K x NLC BLACK EXTENDER 22E																			
# of Calves/Weaning Ratio: 6/108																			
Comments: Herd bull prospect. Thick and meaty, this bull puts it all together. Use on mature cows. He tested homozygous polled.																			
97W	CE	BW	WW	YW	MCE	Milk	MWW	STAY	CW	YG	Marb	BF	REA	API	TI	FS	SC	ADG	WDA
DATA		98	767													6.2	38.2	2.56	3.42
RATIOS		92	119																
EPD'S	7.2	1.7	44.1	72.9	3.9	9.6	31.6	18.6	8	-0.01	0.22	0.02	0.28	112.7	71.2				

Lot 28 NLC 94W 9653907 3/4 SM 1/4 AN																			
Sire: WS BEEF MAKER R13					Birth Date: 3/27/2009					Red									
Dam: NLC S246					Actual Birth Weight: 83					Polled									
Maternal Sires: NLC PAYDAY 16P x																			
# of Calves/Weaning Ratio: 1/102																			
Comments: A good Beefmaker son with great EPD's and the performance to validate them.																			
94W	CE	BW	WW	YW	MCE	Milk	MWW	STAY	CW	YG	Marb	BF	REA	API	TI	FS	SC	ADG	WDA
DATA		88	655													5	36.1	2.44	2.85
RATIOS		103	102																
EPD'S		-1.5	28.8	61.6		11.4	25.8		-2.6	0.12	0.46	0.06	0.07	122.9	72.9				

Lot 29 NLC 118W 9653921 3/4 SM 1/4 AN																			
Sire: BF M218 SNAKE EYES					Birth Date: 4/6/2009					Red									
Dam: NLC R106 RITTI					Actual Birth Weight: 98					Polled									
Maternal Sires: LCC PAPA FORTE H154L x ER BLACK BEAR 604D																			
# of Calves/Weaning Ratio: 3/103																			
Comments: Snake Eyes has done a good job on this thick red calf.																			
118W	CE	BW	WW	YW	MCE	Milk	MWW	STAY	CW	YG	Marb	BF	REA	API	TI	FS	SC	ADG	WDA
DATA		99	668													5.8	40.2	3.47	3.42
RATIOS		91	104																
EPD'S		0.7	32.4	63.5		2.6	18.8		1.6	-0.01	0.13	0.05	0.44	99.6	62.6				

Lot 30 NLC 249U 2481269 1/2 SM 1/2 AR																			
Sire: WS BEEF MAKER R13					Birth Date: 9/14/2008					Red									
Dam: NLC LD673					Actual Birth Weight: 72					Polled									
Maternal Sires: LCHMN GRANDCANYON 1244 x ER RED E538																			
# of Calves/Weaning Ratio:																			
Comments: A nice 3/4 Beefmaker son																			
249U	CE	BW	WW	YW	MCE	Milk	MWW	STAY	CW	YG	Marb	BF	REA	API	TI	FS	SC	ADG	WDA
DATA		71	605													4.9	39*	2.19	2.65
RATIOS		113	106																
EPD'S		-2.4	31.9	60		14.1	30		-5.3	0.06	0.29	0.05	0.15	123.6	72.8				

Red

Sim-Angus Bulls

Lot 31		NLC 77W				9653896				5/8 SM 3/8 AN									
Sire:		NLC STETSON 36S				Birth Date: 3/23/2009				Red									
Dam:		NLC MESMA LG140				Actual Birth Weight: 86				Polled									
Maternal Sires: BASIN TRAVELER 823K x SRS FORTUNE 500																			
# of Calves/Weaning Ratio:																			
Comments: Red, smooth, long and thick muscled. He tested heterozygous polled.																			
77W	CE	BW	WW	YW	MCE	Milk	MWW	STAY	CW	YG	Marb	BF	REA	API	TI	FS	SC	ADG	WDA
DATA		86	642													5.4	37.4	2.52	3.03
RATIOS		0	0																
EPD'S		-1.1	43.4	83.2		3.8	25.5		10.5	0.17	0.35	0.07	0.15	118.1	76				

Lot 32		NLC 8W				9653853				1/2 SM 1/2 AR									
Sire:		NLC WHO ARE YA 162R				Birth Date: 3/1/2009				Red									
Dam:		NLC TALYA T120				Actual Birth Weight: 85				Polled									
Maternal Sires: J BAR 7 GRAND CANYON2222 x NLC LENNOX L330L																			
# of Calves/Weaning Ratio: 1/103																			
Comments: 8W is powerful and full of red meat. This calf is impressive.																			
8W	CE	BW	WW	YW	MCE	Milk	MWW	STAY	CW	YG	Marb	BF	REA	API	TI	FS	SC	ADG	WDA
DATA		92	665													5.2	36.7	3.15	3.01
RATIOS		98	103																
EPD'S		-0.4	22.9	56.5		7.2	18.7		-3.6	0.19	0.22	0.05	-0.25	93.4	56				

Lot 33		NLC 87W				9653903				5/8 SM 3/8 AR									
Sire:		NLC WHO ARE YA 162R				Birth Date: 3/26/2009				Red									
Dam:		NLC P09 PAT				Actual Birth Weight: 89				Polled									
Maternal Sires: NLC MAHOGANY L137M x LCHMN GRAND CANYON 2419J																			
# of Calves/Weaning Ratio: 4/105																			
Comments: These "Who Are Ya" sons are good. Off grass, 87W weaned at 738# with a 115 ratio and he ranked 6 out of 73 and has kept growing.																			
87W	CE	BW	WW	YW	MCE	Milk	MWW	STAY	CW	YG	Marb	BF	REA	API	TI	FS	SC	ADG	WDA
DATA		89	738													5.3	39.1	4.14	3.58
RATIOS		102	115																
EPD'S		-1.6	29.9	64.2		5.2	20.1		-1.2	0.16	0.2	0.03	-0.27	105	63.7				

Lot 34 NLC 44W 9653874 1/2 SM 1/2 AR																			
Sire: LJC MISSION STATEMENTP27					Birth Date: 3/18/2009					Red									
Dam: NLC N40 NAOMI					Actual Birth Weight: 95					Polled									
Maternal Sires: SRS FORTUNE 500 x LCHMAN LUCKY BUCK 7049C																			
# of Calves/Weaning Ratio: 5/107																			
Comments: Lot 34 and Lot 35 are a pair of powerful Mission Statement sons. Which one do you like better?																			
44W	CE	BW	WW	YW	MCE	Milk	MWW	STAY	CW	YG	Marb	BF	REA	API	TI	FS	SC	ADG	WDA
DATA		94	727													5.9	37.6	3.55	3.69
RATIOS		96	113																
EPD'S		0.3	35.7	82.1		4.5	22.4		12.6	0.09	0.43	0.05	0.28	109.2	70.1				

Lot 35 NLC 68W 9653888 1/2 SM 1/2 AR																			
Sire: LJC MISSION STATEMENTP27					Birth Date: 3/21/2009					Red									
Dam: LRS MS RED REALITY 218M					Actual Birth Weight: 98					Polled									
Maternal Sires: LRS RED REALITY 33J x NLC 64Y TOMCAT																			
# of Calves/Weaning Ratio: 6/101																			
Comments: Lot 35 and Lot 34 are out of the Genex Red Angus bull, Mission Statement and both are stout.																			
68W	CE	BW	WW	YW	MCE	Milk	MWW	STAY	CW	YG	Marb	BF	REA	API	TI	FS	SC	ADG	WDA
DATA		97	699													6	39.8	3.28	3.71
RATIOS		93	109																
EPD'S		0	31.9	76.3		-2.5	13.5		8.8	0.03	0.36	0.03	0.24	106.1	67				

Lot 36 NLC 112W 9653917 1/2 SM 1/2 AR																			
Sire: LJC MISSION STATEMENTP27					Birth Date: 4/3/2009					Red									
Dam: NLC LL284 LAMEE					Actual Birth Weight: 93					Polled/Scurred									
Maternal Sires: NLC GOOD A NUFF 33G x ER RED E538																			
# of Calves/Weaning Ratio: 7/105																			
Comments: 112W's dam, L49, dam has always done a good job and this is no exception.																			
112W	CE	BW	WW	YW	MCE	Milk	MWW	STAY	CW	YG	Marb	BF	REA	API	TI	FS	SC	ADG	WDA
DATA		92	650													6.1	36	2.94	3.28
RATIOS		98	101																
EPD'S		-0.2	26.3	68.4		4.9	18.1		4	0.12	0.27	0.05	0.07	97.9	60.3				

The bulls will be ultrasounded on February 4, 2010. The results will be posted on our website as soon as they are available.

Check out our website at:

www.nelsonlivestockco.com

Black Sim-Angus Bulls

Lot 37 NLC 86W 9653902 1/2 SM 1/2 AN																			
Sire: SSF BLK P-DESIGN R424					Birth Date: 3/26/2009					Black									
Dam: NLC MERSEY MG124					Actual Birth Weight: 77					Polled									
Maternal Sires: CONNEALY KC 5029 x BDV BLACK CYCLONE 2C																			
# of Calves/Weaning Ratio: 6/101																			
Comments: His dam has a progeny weaning wt ratio of 101 on 6 calves, 104 on yearling ratio, 109 ratio of IMF, and 111 ratio on REA.																			
86W	CE	BW	WW	YW	MCE	Milk	MWW	STAY	CW	YG	Marb	BF	REA	API	TI	FS	SC	ADG	WDA
DATA		76	631													4.7	35.1	3.11	3.21
RATIOS		116	98																
EPD'S		-3.2	21.5	49.8		9.3	20		-12	0.04	0.54	0.04	0.04	125.6	70.2				

Lot 38 NLC 105W 9653913 1/2 SM 1/2 AN																			
Sire: SSF BLK P-DESIGN R424					Birth Date: 4/1/2009					Black									
Dam: NLC S191 SOVA					Actual Birth Weight: 80					Polled/Scurred									
Maternal Sires: LCC MACK J229M x BOZ RED JET																			
# of Calves/Weaning Ratio: 2/111																			
Comments: He has calving ease with lots of carcass potential.																			
105W	CE	BW	WW	YW	MCE	Milk	MWW	STAY	CW	YG	Marb	BF	REA	API	TI	FS	SC	ADG	WDA
DATA		83	691													4.9	33.9	3.2	3.34
RATIOS		108	107																
EPD'S		-3.2	14.5	41.8		12.8	20		-16.5	0.12	0.49	0.06	-0.12	117.3	63.5				

Lot 39 NLC 164W 9653948 1/2 SM 1/2 AN																			
Sire: SSF BLK P-DESIGN R424					Birth Date: 4/10/2009					Black									
Dam: NLC S217 SQUIRT					Actual Birth Weight: 80					Polled									
Maternal Sires: LCC PAPA FORTE H912L x GW LUCKY SEVEN 604K																			
# of Calves/Weaning Ratio: 2/108																			
Comments: His dam has a progeny ratio of 108 for weaning wt.																			
164W	CE	BW	WW	YW	MCE	Milk	MWW	STAY	CW	YG	Marb	BF	REA	API	TI	FS	SC	ADG	WDA
DATA		83	696													4.5	36.1	3.08	3.29
RATIOS		108	108																
EPD'S		-3.4	18.5	49.2		13.7	22.9		-12.4	0.03	0.49	0.03	-0.01	122.6	67.4				

Lot 40 NLC 3W 9653849 5/8 SM 3/8 AN																			
Sire: NLC STETSON 36S					Birth Date: 2/24/2009					Black									
Dam: NLC TEAL T32					Actual Birth Weight: 70					Polled									
Maternal Sires: CONNEALY KC 5029 x 3C WALLY C240 BLK																			
# of Calves/Weaning Ratio: 1/98																			
Comments: Nice calving ease and he should sire nice females.																			
3W	CE	BW	WW	YW	MCE	Milk	MWW	STAY	CW	YG	Marb	BF	REA	API	TI	FS	SC	ADG	WDA
DATA		76	629													4.5	35.9	2.7	2.74
RATIOS		116	98																
EPD'S		-1.4	35.8	64.8		0.5	18.4		-1.1	0.1	0.43	0.07	0.23	119.2	73				

Lot 41 NLC 9W 9653854 5/8 SM 3/8 AN																			
Sire: NLC STETSON 36S					Birth Date: 3/1/2009					Black									
Dam: NLC TIBERIA T20					Actual Birth Weight: 88					Polled									
Maternal Sires: H S A F BANDO 1961 x STF RED RANSOM																			
# of Calves/Weaning Ratio: 1/106																			
Comments: Don't miss looking at this nice calf. He does it all.																			
9W	CE	BW	WW	YW	MCE	Milk	MWW	STAY	CW	YG	Marb	BF	REA	API	TI	FS	SC	ADG	WDA
DATA		93	683													5	37	3.1	3.06
RATIOS		97	106																
EPD'S		0	41.8	75.4		3.9	24.8		7.2	0.14	0.47	0.06	0.11	116.3	74.7				

Lot 42 NLC 70W 9653890 5/8 SM 3/8 AN																			
Sire: NLC STETSON 36S					Birth Date: 3/21/2009					Black									
Dam: NLC MESMA LG140					Actual Birth Weight: 80					Polled									
Maternal Sires: BASIN TRAVELER 823K x SRS FORTUNE 500																			
# of Calves/Weaning Ratio:																			
Comments: Herd bull prospect. An ET son of M28, our donor cow. Packed full of meat and muscle on a medium frame. M28 has a progeny record of weaning wt ratio on 117 on 5 calves, yrlg wt ratio of 116 on 3 calves, and a RE ratio of 110. He tested homozygous black & heterozygous polled.																			
70W	CE	BW	WW	YW	MCE	Milk	MWW	STAY	CW	YG	Marb	BF	REA	API	TI	FS	SC	ADG	WDA
DATA		80	619													5	38.3	3.4	3.31
RATIOS		0	0																
EPD'S		-1.1	43.4	83.2		3.8	25.5		10.5	0.17	0.35	0.07	0.15	118.1	76				

Lot 43 NLC 91W 2518356 1/2 SM 1/2 AN																			
Sire: NLC STETSON 36S					Birth Date: 3/26/2009					Black									
Dam: CRAFT FAME 750-3613					Actual Birth Weight: 93					Polled									
Maternal Sires: S A F FAME x CRAFT 71 TRAVELER 4E																			
# of Calves/Weaning Ratio:																			
Comments: This calf has been a standout all year. He is the last of this good group of Stetson 36S bull calves. He is being tested for homozygous black.																			
91W	CE	BW	WW	YW	MCE	Milk	MWW	STAY	CW	YG	Marb	BF	REA	API	TI	FS	SC	ADG	WDA
DATA		93	709													5.5	33.6	2.42	3.22
RATIOS		88	109																
EPD'S		-0.9	36.1	63		0.2	18.3		-1.5	0.17	0.44			107	68				

Lot 3 - 72W



Lot 11 - 187W



Lot 20 - 53W



Lot 21 - 66W



Lot 34 - 44W



Lot 35 - 68W



Lot 37 - 86W



Lot 42 - 70W



Lot 43 - 91W



Lot 59 - 96W



Lot 67 - 241U



Lot 71 - 242U



Lot 76 - 40W



Lot 87 - 5W



Lot 88 - 35W



Lot 89 - 36W



Lot 44 NLC 26W 2518353 1/2 SM 1/2 AN																			
Sire: NLC MALTA L132M					Birth Date: 3/10/2009					Black									
Dam: CRAFT BLACKBIRD R124-T06					Actual Birth Weight: 70					Polled/Scurred									
Maternal Sires: H S A F BANDO 1961 x LCC PAPA FORTE H154L																			
# of Calves/Weaning Ratio:																			
Comments: This bull should be homozygous black by pedigree.																			
26W	CE	BW	WW	YW	MCE	Milk	MWW	STAY	CW	YG	Marb	BF	REA	API	TI	FS	SC	ADG	WDA
DATA		74	640													4.5	36.7	2.76	2.86
RATIOS		114	101																
EPD'S		-4	23.7	52.6		3.7	15.6		-11.6	0.21	0.5			127	71				

Lot 45 NLC 120W 2518345 1/2 SM 1/2 AN																			
Sire: NLC MALTA L132M					Birth Date: 4/6/2009					Black									
Dam: CRAFT 475 LUCY BOY 814-S47					Actual Birth Weight: 90					Polled/Scurred									
Maternal Sires: GDAR NEW DESIGN 475 x V D A R LUCYS BOY																			
# of Calves/Weaning Ratio:																			
Comments: He should be homozygous black by pedigree.																			
120W	CE	BW	WW	YW	MCE	Milk	MWW	STAY	CW	YG	Marb	BF	REA	API	TI	FS	SC	ADG	WDA
DATA		92	589													4.5	40.2	2.8	2.92
RATIOS		93	93																
EPD'S		-2.2	15.1	40.7		1.6	9.2		-15.8	0.15	0.45			110	60				

Lot 46 NLC 124W 2518346 1/2 SM 1/2 AN																			
Sire: BF M218 SNAKE EYES					Birth Date: 4/6/2009					Black									
Dam: NLC BELLE P151-S01					Actual Birth Weight: 86					Polled									
Maternal Sires: BON VIEW NEW DESIGN 208 x LCC PAPA FORTE H154L																			
# of Calves/Weaning Ratio:																			
Comments: There is good performance on this nice Sim-Angus bull.																			
124W	CE	BW	WW	YW	MCE	Milk	MWW	STAY	CW	YG	Marb	BF	REA	API	TI	FS	SC	ADG	WDA
DATA		87	715													5.5	36.2	3.41	3.54
RATIOS		99	112																
EPD'S		-2.4	34.8	68.5		9.9	27.3		-0.1	0.1	0.4			123	73				

Lot 47 NLC 127W 2518347 1/2 SM 1/2 AN																			
Sire: BF M218 SNAKE EYES					Birth Date: 4/9/2009					Black									
Dam: CRAFT LADY JEWEL 3112 E02					Actual Birth Weight: 80					Polled									
Maternal Sires: G D A R TRAVELER 71 x R R SCOTCHCAP 9440																			
# of Calves/Weaning Ratio:																			
Comments: His dam, E02, has a progeny weaning wt ratio of 103 on 8 calves and a RE ratio of 105.																			
127W	CE	BW	WW	YW	MCE	Milk	MWW	STAY	CW	YG	Marb	BF	REA	API	TI	FS	SC	ADG	WDA
DATA		80	592													5	34.8	3.56	3.31
RATIOS		103	91																
EPD'S		-3.1	18.3	44.3		9	18.1		-15.1	0.16	0.28			109	59				

Lot 48 NLC 128W 2518348 1/2 SM 1/2 AN																			
Sire: BF M218 SNAKE EYES					Birth Date: 4/10/2009					Black									
Dam: CRAFT PRINCESS 509-130					Actual Birth Weight: 94					Polled									
Maternal Sires: BON VIEW NEW DESIGN 1407 x H A EMULATION 1111																			
# of Calves/Weaning Ratio:																			
Comments: His angus dam has a progeny ratio for weaning wt of 102 and a RE ratio of 117.																			
128W	CE	BW	WW	YW	MCE	Milk	MWW	STAY	CW	YG	Marb	BF	REA	API	TI	FS	SC	ADG	WDA
DATA		93	631													6	40.4	2.71	3.14
RATIOS		92	99																
EPD'S		-1.6	24.3	53.3		3.9	16		-7.7	0.08	0.43			112	64				

Lot 49 NLC 130W 2518349 1/2 SM 1/2 AN																			
Sire: BF M218 SNAKE EYES					Birth Date: 4/11/2009					Black									
Dam: CRAFT BLUECAP 562-G821					Actual Birth Weight: 82					Polled									
Maternal Sires: CONNEALY KC 5029 x TOKACH BOLD RULER 8404																			
# of Calves/Weaning Ratio:																			
Comments: His angus dam has a 100 weaning wt progeny ratio and a 102 RE progeny ratio.																			
130W	CE	BW	WW	YW	MCE	Milk	MWW	STAY	CW	YG	Marb	BF	REA	API	TI	FS	SC	ADG	WDA
DATA		81	612													4.2	39.4	2.67	3.06
RATIOS		106	96																
EPD'S		-2.3	25.1	50.3		0.8	13.4		-10.7	-0.04	0.14			106	60				

Lot 50 NLC 140W 2518350 1/2 SM 1/2 AN																			
Sire: BF M218 SNAKE EYES					Birth Date: 4/16/2009					Black									
Dam: N L C BELLE 27B-3476					Actual Birth Weight: 81					Polled									
Maternal Sires: CONNEALY KC 5029 x GALENA VALEDICTORIAN 20																			
# of Calves/Weaning Ratio:																			
Comments: Calving ease and super carcass potential are in this April calf.																			
140W	CE	BW	WW	YW	MCE	Milk	MWW	STAY	CW	YG	Marb	BF	REA	API	TI	FS	SC	ADG	WDA
DATA		80	596													5.5	39.7	2.79	3.06
RATIOS		107	94																
EPD'S		-2.6	24.1	50.8		3.1	15.1		-10.7	0.07	0.26			111	63				

Lot 51 NLC 141W 9653932 3/4 SM 1/4 AN																			
Sire: BF M218 SNAKE EYES					Birth Date: 4/15/2009					Black									
Dam: NLC N140					Actual Birth Weight: 92					Polled									
Maternal Sires: COMMERCIAL ANGUS BULL x NLC GOTHIC 31G																			
# of Calves/Weaning Ratio: 6/97																			
Comments: A commercial sim-angus bull that has gained well at 3.31 ADG.																			
141W	CE	BW	WW	YW	MCE	Milk	MWW	STAY	CW	YG	Marb	BF	REA	API	TI	FS	SC	ADG	WDA
DATA		91	655													5.4	39.7	3.31	3.43
RATIOS		99	102																
EPD'S																			

Lot 52 NLC 50W 9653879 1/4 SM 3/4 AN																			
Sire: WOODHILL MAINLINE					Birth Date: 3/18/2009					Black									
Dam: NLC R18 ROYA					Actual Birth Weight: 108					Polled									
Maternal Sires: CONNEALY KC 5029 x SRS FORTUNE 500																			
# of Calves/Weaning Ratio: 3/109																			
Comments: A powerful 1/2 Sim-Angus bull. Use on mature cows.																			
50W	CE	BW	WW	YW	MCE	Milk	MWW	STAY	CW	YG	Marb	BF	REA	API	TI	FS	SC	ADG	WDA
DATA		109	696													5.1	39.6	4.23	3.72
RATIOS		80	102																
EPD'S		0.1	43	85.6		3.3	24.8		13.9	0.31	0.53	0.11	0.07	108.7	73.8				

Lot 53 NLC 10W 9653855 5/8 SM 3/8 AN																			
Sire: NLC PAYDAY 16P					Birth Date: 3/1/2009					Black									
Dam: NLC TAMERA T122					Actual Birth Weight: 80					Polled									
Maternal Sires: SSF BLACK EXCEL N592 x LCC PAPA FORTE H154L																			
# of Calves/Weaning Ratio: 1/107																			
Comments: 10W, sire, NLC PayDay 16P's performance is real. 10W has a 0 birth weight EPD and close to 90 yearling EPD. This is what we are striving to raise.																			
10W	CE	BW	WW	YW	MCE	Milk	MWW	STAY	CW	YG	Marb	BF	REA	API	TI	FS	SC	ADG	WDA
DATA		86	692													6.2	33.7	4.19	3.43
RATIOS		105	107																
EPD'S		-0.4	50.2	89.4		-4.2	20.9		14.8	0.18	0.26	0.06	0.09	114.5	77				

Lot 54 NLC 18W 2518352 1/2 SM 1/2 AN																			
Sire: NLC PAYDAY 16P					Birth Date: 3/8/2009					Black									
Dam: NLC 72P REDIRECT P178-S22					Actual Birth Weight: 80					Polled									
Maternal Sires: NLC REDIRECT J69-729 x LCC PAPA FORTE H912L																			
# of Calves/Weaning Ratio:																			
Comments: His dam has a angus progeny ratio of 111 for weaning wt.																			
18W	CE	BW	WW	YW	MCE	Milk	MWW	STAY	CW	YG	Marb	BF	REA	API	TI	FS	SC	ADG	WDA
DATA		82	658													4.9	39.1	1.39	2.57
RATIOS		105	103																
EPD'S		-3	30.2	65.8		4.7	19.8		-2.3	0.25	0.41			112	68				

Lot 55 NLC 100W 2518344 1/2 SM 1/2 AN																			
Sire: NLC PAYDAY 16P					Birth Date: 3/30/2009					Black									
Dam: N L C MISSIE BELLE J01-N117					Actual Birth Weight: 98					Polled									
Maternal Sires: CONNEALY KC 5029 x CRAFT 71 TRAVELER 4E																			
# of Calves/Weaning Ratio:																			
Comments: These NLC PayDay 16P's sons are nice.																			
100W	CE	BW	WW	YW	MCE	Milk	MWW	STAY	CW	YG	Marb	BF	REA	API	TI	FS	SC	ADG	WDA
DATA		97	638													5.2	38.8	2.91	3.19
RATIOS		87	100																
EPD'S		-0.3	37.2	69.5		-1.3	17.3		3.5	0.3	0.34			98	64				

Lot 56 NLC 21W 9653863 1/2 SM 1/2 AN																			
Sire: SSF BLK BONVIEW S295					Birth Date: 3/12/2009					Black									
Dam: NLC S173 SANGER					Actual Birth Weight: 85					Polled									
Maternal Sires: LCC PAPA FORTE H154L x SRS FORTUNE 500																			
# of Calves/Weaning Ratio: 2/101																			
Comments: His dam has a progeny weaning wt ratio of 101.																			
21W	CE	BW	WW	YW	MCE	Milk	MWW	STAY	CW	YG	Marb	BF	REA	API	TI	FS	SC	ADG	WDA
DATA		88	676													5.1	37.8	2.99	3.12
RATIOS		103	105																
EPD'S		-2.1	23.1	53.3		6.6	18.2		-8.3	0.09	0.49	0.04	-0.08	117.3	67.4				

Lot 57 NLC 32W 9653869 1/2 SM 1/2 AN																			
Sire: SSF BLK BONVIEW S295					Birth Date: 3/15/2009					Black									
Dam: NLC N163					Actual Birth Weight: 85					Polled/Scurred									
Maternal Sires: LCC PAPA FORTE H154L x NLC 64Y TOMCAT																			
# of Calves/Weaning Ratio: 5/91																			
Comments: 32W's dam is moderate framed, easy doing, thick and full of meat and this calf follows the pattern.																			
32W	CE	BW	WW	YW	MCE	Milk	MWW	STAY	CW	YG	Marb	BF	REA	API	TI	FS	SC	ADG	WDA
DATA		84	631													4.4	41	2.9	3.08
RATIOS		107	98																
EPD'S		-3.2	18.8	44.3		6	15.4		-15.3	0.09	0.5	0.06	0	121.2	67				

Lot 58 NLC 65W 2518354 1/2 SM 1/2 AN																			
Sire: BLACK SOLUTION P19					Birth Date: 3/20/2009					Black									
Dam: NLC MISS USPB P79-S76					Actual Birth Weight: 80					Polled									
Maternal Sires: G A R US PREMIUM BEEF x DANINA NEW DESIGN 120																			
# of Calves/Weaning Ratio:																			
Comments: He should be homozygous black and polled by pedigree.																			
65W	CE	BW	WW	YW	MCE	Milk	MWW	STAY	CW	YG	Marb	BF	REA	API	TI	FS	SC	ADG	WDA
DATA		82	608													5	35.7	2.82	3.03
RATIOS		105	96																
EPD'S		-2.1	21.6	58.7		5.2	16		-4.6	0.11	0.4			112	64				



Families are like fudge-- mostly sweet with a few nuts.

Lot 59 NLC 96W 9653915 3/8 SM 5/8 AN																			
Sire: MEDROCK EMBLAZON702 707					Birth Date: 3/28/2009					Black									
Dam: NLC TULASI T23					Actual Birth Weight: 94					Polled									
Maternal Sires: GW LUCKY MAN 644N x LCC MACK J229M																			
# of Calves/Weaning Ratio:																			
Comments: Should be homozygous polled and black by pedigree.																			
96W	CE	BW	WW	YW	MCE	Milk	MWW	STAY	CW	YG	Marb	BF	REA	API	TI	FS	SC	ADG	WDA
DATA		94	625													4.7	36.7	2.63	3
RATIOS		91	98																
EPD'S		-2.8	28.7	61.8		6.9	21.3		-4.4	0.18	0.39	0.07	-0.07	110	66				

Lot 60 NLC 122W 9653924 1/2 SM 1/2 AN																			
Sire: MEDROCK EMBLAZON702 707					Birth Date: 4/7/2009					Black									
Dam: NLC L141 LONNIE					Actual Birth Weight: 81					Polled									
Maternal Sires: SRS FORTUNE 500 x ER MACKFRID 550B																			
# of Calves/Weaning Ratio: 6/101																			
Comments: A nice 1/2 Sim-Angus bull out of a good Fortune 500 cow and our new angus herdsire, Med Rock Emblazon 702 707.																			
122W	CE	BW	WW	YW	MCE	Milk	MWW	STAY	CW	YG	Marb	BF	REA	API	TI	FS	SC	ADG	WDA
DATA		80	623													5.3	38.2	3.08	3.25
RATIOS		112	97																
EPD'S		-4.1	22.4	56.1		9.3	20.5		-9.4	0.16	0.52	0.06	-0.16	128.9	72.5				

Lot 61 NLC 129W 9653927 1/2 SM 1/2 AN																			
Sire: MEDROCK EMBLAZON702 707					Birth Date: 4/11/2009					Black									
Dam: NLC K7434 KAWN					Actual Birth Weight: 92					Polled									
Maternal Sires: NLC FOCUS 87F x LEACHMAN RED KAT 275A																			
# of Calves/Weaning Ratio: 8/99																			
Comments: 129W really gained well with an ADG of 3.65.																			
129W	CE	BW	WW	YW	MCE	Milk	MWW	STAY	CW	YG	Marb	BF	REA	API	TI	FS	SC	ADG	WDA
DATA		91	646													5.6	37.9	3.65	3.54
RATIOS		99	100																
EPD'S		-1.1	34.6	62.3		1	18.3		-2.1	0.21	0.48	0.09	0.01	117.2	72				

Lot 62 NLC 139W 9653933 1/2 SM 1/2 AN																			
Sire: TRINITY RITO 112 6314					Birth Date: 4/16/2009					Black									
Dam: SCC BLACK CALLIE 106G					Actual Birth Weight: 89					Polled									
Maternal Sires: CIRCLE S LEACHMAN 600U x BURNS BULL X339U																			
# of Calves/Weaning Ratio: 11/107																			
Comments: He should be homozygous black by pedigree.																			
139W	CE	BW	WW	YW	MCE	Milk	MWW	STAY	CW	YG	Marb	BF	REA	API	TI	FS	SC	ADG	WDA
DATA		88	667													5.6	33.2	3.19	3.42
RATIOS		103	104																
EPD'S		0.2	42	83.1		8.9	29.9		12.5	0.2	0.64	0.06	0.02	122	78.7				

Lot 63 NLC 131W 9653928 1/2 SM 1/2 AN																			
Sire: NLCFUTUREDIRECTIONJ3274R					Birth Date: 4/11/2009					Black									
Dam: NLC MONNEY ML148					Actual Birth Weight: 90					Polled									
Maternal Sires: LCHMN NLC TOMCAT 7172H x NLC FOCUS 87F																			
# of Calves/Weaning Ratio: 6/106																			
Comments: He has an ADG of 3.61 out of one of our high performer cows.																			
131W	CE	BW	WW	YW	MCE	Milk	MWW	STAY	CW	YG	Marb	BF	REA	API	TI	FS	SC	ADG	WDA
DATA		89	652													6.3	39.4	3.61	3.56
RATIOS		102	101																
EPD'S		0.1	29.1	51.9		11	25.5		-6.9	0.17	0.35	0.08	0.02	111	63.7				

Lot 64 NLC 138W 9653934 1/2 SM 1/2 AN																			
Sire: NLCFUTUREDIRECTIONJ3274R					Birth Date: 4/18/2009					Black									
Dam: NLC N146 NALINA					Actual Birth Weight: 79					Polled									
Maternal Sires: SRS FORTUNE 500 x NLC RED DIAMOND 32D																			
# of Calves/Weaning Ratio: 5/100																			
Comments:																			
138W	CE	BW	WW	YW	MCE	Milk	MWW	STAY	CW	YG	Marb	BF	REA	API	TI	FS	SC	ADG	WDA
DATA		78	683													5.1	40.3	3.19	3.5
RATIOS		114	106																
EPD'S		1.2	31.4	62.6		10.3	26.1		-0.9	0.23	0.51	0.07	-0.18	118	69.9				

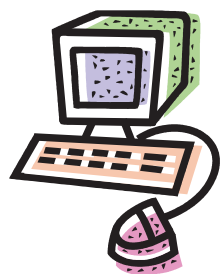
Lot 65 NLC 90W 2518355 1/2 SM 1/2 AN																			
Sire: NLC FORTUNATE SON 100N					Birth Date: 3/26/2009					Black									
Dam: NLC BLACKBIRD J90-R154					Actual Birth Weight: 91					Polled									
Maternal Sires: LCC PAPA FORTE H154L x BDA RITO 9723																			
# of Calves/Weaning Ratio:																			
Comments: He should be homozygous black and polled by pedigree.																			
90W	CE	BW	WW	YW	MCE	Milk	MWW	STAY	CW	YG	Marb	BF	REA	API	TI	FS	SC	ADG	WDA
DATA		91	682													5.7	37.1	2.37	3.09
RATIOS		94	107																
EPD'S		-1.1	21.6	49.7		9.4	20.2		-9	0.18	0.44			107	61				

Lot 66 NLC 95W 2518357 1/2 SM 1/2 AN																			
Sire: NLC FORTUNATE SON 100N					Birth Date: 3/28/2009					Black									
Dam: CRAFT EDWINA 824-N45					Actual Birth Weight: 80					Polled									
Maternal Sires: DANINA NEW DESIGN 120 x R R REGAL 1459																			
# of Calves/Weaning Ratio:																			
Comments: Should be homozygous polled and black by pedigree.																			
95W	CE	BW	WW	YW	MCE	Milk	MWW	STAY	CW	YG	Marb	BF	REA	API	TI	FS	SC	ADG	WDA
DATA		79	645													5.6	32.2	3.09	3.29
RATIOS		108	101																
EPD'S		-1.4	29.7	59.3		1.3	16.1		-4	0.22	0.37			110	66				

Lot 67 NLC 241U 2518337 1/2 SM 1/2 AN																			
Sire: NLC FORTUNATE SON 100N					Birth Date: 8/30/2008					Black									
Dam: NLC 750 PAPA FORTE 750-P63					Actual Birth Weight: 91					Polled									
Maternal Sires: LCC PAPA FORTE H912L x CRAFT 71 TRAVELER 4E																			
# of Calves/Weaning Ratio:																			
Comments: He is thick and good. He tested homozygous black and homozygous polled.																			
241U	CE	BW	WW	YW	MCE	Milk	MWW	STAY	CW	YG	Marb	BF	REA	API	TI	FS	SC	ADG	WDA
DATA		84	584													4.9	42*	3.06	2.73
RATIOS		101	0																
EPD'S		-2.2	11.4	29		6.8	12.5		-22.9	0.08	0.31			102	53				

Lot 68 NLC 257U 2518340 1/2 SM 1/2 AN																			
Sire: NLC FORTUNATE SON 100N					Birth Date: 9/10/2008					Black									
Dam: NLC 1407 LADY JEWEL E02-P49					Actual Birth Weight: 80					Polled									
Maternal Sires: BON VIEW NEW DESIGN 1407 x G D A R TRAVELER 71																			
# of Calves/Weaning Ratio:																			
Comments: His dam has an ultrasound %IMF of 116 on 2 calves. Should be homozygous black by pedigree.																			
257U	CE	BW	WW	YW	MCE	Milk	MWW	STAY	CW	YG	Marb	BF	REA	API	TI	FS	SC	ADG	WDA
DATA		80	530													4.9	38*	3.23	2.87
RATIOS		105	96																
EPD'S		-2.9	17.4	45.4		13.4	22.1		-14	0.23	0.61			121	66				

Lot 69 NLC 245U 2518339 1/2 SM 1/2 AN																			
Sire: NLC PROUD 41P					Birth Date: 9/10/2008					Black									
Dam: CRAFT LADY JEWEL 649-858					Actual Birth Weight: 85					Polled									
Maternal Sires: C H REVIVAL 5557 x MED ROCK BIG MEDICINE																			
# of Calves/Weaning Ratio:																			
Comments: Powerful and thick. His dam has a progeny weaning wt ratio of 111 and a yearling wt ratio of 104. He will be tested for homozygous black and polled.																			
245U	CE	BW	WW	YW	MCE	Milk	MWW	STAY	CW	YG	Marb	BF	REA	API	TI	FS	SC	ADG	WDA
DATA		85	560													5.8	39.5*	3.28	3.15
RATIOS		99	102																
EPD'S		-1.3	30	56.8		-1.3	13.7		-5.5	0.13	0.25			106	63				



Take a look at our website at:
www.nelsonlivestockco.com
 and you will find pictures of the bulls, ultra-
 sound data, homozygous black and polled-
 data, the catalog, and much more.

Crossbreeding . . . Simplified!

By Marty Ropp

It is an absolute given that if you make your living in agriculture production then you will make more money by utilizing heterosis than by ignoring its value. There are hundreds, if not thousands of research reports repeated showing the value of hybrid vigor with almost no dispute. Its positive effects on reproductive traits, growth and production efficiency are well documented and substantial. Why then, if heterosis is such a phenomenal tool to promote profitability, did crossbreeding lose favor in the beef industry? Two primary reasons rise to the top of the list. First, managing the promoted crossbreeding systems of the 70's and 80's was difficult if not impossible. Second, the list of breeds offering little or no production and or product value to the US beef system was far too long. With no workable and simple system to maintain a useful and consistent level of heterosis in commercial herds and no plan to logically combine complimentary breeds and take advantage of each breeds strengths and information, "old style" crossbreeding was doomed.

Straightbreeding solved one of these problems. It was and is simple! Additionally, over time the commercial cowherd and the marketed progeny became more and more uniform in terms of breed composition and biological type and thus was easier to manage and market. That's great, except that once the hybrid vigor was bred out of the commercial cow herd, which takes 15 to 20 years, production efficiency and profits were bred out too. Remember that a crossbred cow produces on average the equivalent of 1 to 1.5 more calves during her lifetime than a straightbred cow! In addition there obviously is no chance of incorporating available and valuable breed complementarity when straightbreeding so breed weaknesses become industry weaknesses.

Using SimAngus composite bulls offers the simplicity and ultimate breed percentage uniformity of straightbreeding, PLUS the undeniable value of retained heterosis to commercial cowherds. The more generations of SimAngus bulls you use the more similar your cowherd becomes in terms of breed composition and biological type regardless of the initial cowherd makeup. Also, one breed of bull can be turned out with any group of females just like in a simplistic straightbreeding scenario. By selecting genetically high value SimAngus bulls, black or red, commercial producers can also take advantage of the breed complementarity of the highest value Continental and British gene pools available. SimAngus designed composites are a simple answer to a question that this industry got wrong the last time around. For more information on SimAngus, Simmental and the other products and services of the American Simmental Association, go to www.simmental.org.

Purebred Angus Bulls

Lot 70	NLC 240U										16513961				Angus				
Sire:	H S A F Bando 1961										Birth Date: 8/27/2008				Color: Black				
Dam:	N L C Blackbird L69-N31										Actual Birth Weight: 91				Polled				
Maternal Grand sire:	Bon View New Design 1407										# of Calves/Weaning Ratio: 2/97								
Comments: 240U is the heaviest of these fall bulls and they are range ready and ready to go																			
NLC 240U	CED	BW	WW	YW	CEM	Milk	\$EN	%IMF	RE	\$W	\$F	\$G	\$QG	\$YG	\$B	FS	SC	ADG	WDA
DATA		91	585													4.9	37.25*	3.10	2.85
RATIOS		112	99																
EPD'S	5	3.4	46	86	8	24	-1.45	0.38	0.03	22.93	26.74	20.92	20.60	0.32	41.26				

Lot 71	NLC 242U										16513963				Angus				
Sire:	H S A F Bando 1961										Birth Date: 9/1/2008				Color: Black				
Dam:	Craft Blackbird 631-3616										Actual Birth Weight: 70				Polled				
Maternal Grand sire:	BDA Rito 9723										# of Calves/Weaning Ratio: 6/101								
Comments: He should have calving ease with his smaller birth weight. His dam has a weaning wt ratio of 101, yearling ratio 101, and a %IMF ratio of 105.																			
NLC 242U	CED	BW	WW	YW	CEM	Milk	\$EN	%IMF	RE	\$W	\$F	\$G	\$QG	\$YG	\$B	FS	SC	ADG	WDA
DATA		70	578													5.4	40*	1.78	2.65
RATIOS		86	98																
EPD'S	2	1.1	39	74	4	22	3.94	0.22	-0.03	25.43	17.80	16.70	14.59	2.11	33.68				

Lot 72	NLC 248U										16513962				Angus				
Sire:	H S A F Bando 1961										Birth Date: 9/7/2008				Color: Black				
Dam:	Craft Jestress 406-3615										Actual Birth Weight: 84				Polled				
Maternal Grand sire:	Bushs Gravity										# of Calves/Weaning Ratio: 7/98								
Comments: His dam has a %IMF ratio of 105 and RE ratio of 107.																			
NLC 248U	CED	BW	WW	YW	CEM	Milk	\$EN	%IMF	RE	\$W	\$F	\$G	\$QG	\$YG	\$B	FS	SC	ADG	WDA
DATA		84	597													4.7	37.5*	2.95	2.68
RATIOS		104	102																
EPD'S	0	3.3	43	76	4	22	3.34	0.21	0.15	23.54	18.22	18.85	14.24	4.61	38.29				

Lot 73		NLC 254U						16513964						Angus					
Sire:		H S A F Bando 1961						Birth Date: 9/15/2008						Color: Black					
Dam:		Craft Bluecap E 562 MG170						Actual Birth Weight: 78						Polled					
Maternal Grand sire:		Connealy KC 5029						# of Calves/Weaning Ratio: 3/107											
Comments: 254U will cover lots of cows. His dam, M80, has a weaning wt ratio of 107 and %IMF ratio of 101 and a RE ratio of 108																			
NLC 254U	CED	BW	WW	YW	CEM	Milk	\$EN	%IMF	RE	\$W	\$F	\$G	\$QG	\$YG	\$B	FS	SC	ADG	WDA
DATA		78	590													4.7	38*	2.86	2.69
RATIOS		96	100																
EPD'S	1	2.9	49	82	6	20	3.42	0.2	0.04	26.46	21.72	14.71	13.80	0.91	34.97				

Lot 74		NLC 22W						620653588						Angus					
Sire:		Woodhill Mainline						Birth Date: 3/12/2009						Color: Black					
Dam:		N L C Blackbird L20-N36						Actual Birth Weight: 80						Polled					
Maternal Grand sire:		Bon View New Design 1407						# of Calves/Weaning Ratio: 3/106											
Comments: His dam, N36, has a weaning wt ratio of 106 and %IMF ratio of 110. He is stout and thick. Should work on heifers.																			
NLC 22W	CED	BW	WW	YW	CEM	Milk	\$EN	%IMF	RE	\$W	\$F	\$G	\$QG	\$YG	\$B	FS	SC	ADG	WDA
DATA		80	660													5	35.3	2.66	3.04
RATIOS		99	107																
EPD'S	10	-0.25	46	86	9	20	2.85	0.54	0.55	28.90	27.14	26.07	21.47	4.6	51.05				

Lot 75		NLC 33W						16514973						Angus					
Sire:		Woodhill Mainline						Birth Date: 3/15/2009						Color: Black					
Dam:		NLC Evergreen M201-R27						Actual Birth Weight: 80						Polled					
Maternal Grand sire:		Bon View New Design 1407						# of Calves/Weaning Ratio: 3/105											
Comments: 33W's dam, R27, has a weaning wt ratio of 105 on 3. He should work on large heifers.																			
NLC 33W	CED	BW	WW	YW	CEM	Milk	\$EN	%IMF	RE	\$W	\$F	\$G	\$QG	\$YG	\$B	FS	SC	ADG	WDA
DATA		80	620													5	33	3.12	3.01
RATIOS		100	100																
EPD'S	8	0	51	99	8	20	-1.84	0.32	0.45	27.01	37.88	19.49	18.48	1.01	49.11				

Lot 76		NLC 40W						16514974						Angus					
Sire:		Woodhill Mainline						Birth Date: 3/16/2009						Color: Black					
Dam:		NLC Blackbird P160-S150						Actual Birth Weight: 65						Polled					
Maternal Grand sire:		NLC Redirect J69-72P						# of Calves/Weaning Ratio: 2/103											
Comments: 40W's dam, S150, has a weaning wt ratio of 103. He should work on heifers.																			
NLC 40W	CED	BW	WW	YW	CEM	Milk	\$EN	%IMF	RE	\$W	\$F	\$G	\$QG	\$YG	\$B	FS	SC	ADG	WDA
DATA		65	635													4.2	31.5	2.12	2.65
RATIOS		83	103																
EPD'S	11	-1.7	49	90	10	17	3.62	0.27	0.57	29.09	29.54	23.69	16.64	7.05	51.76				

Lot 77		NLC 54W				16514975								Angus					
Sire:		Woodhill Mainline				Birth Date: 3/3/2009								Color: Black					
Dam:		NLC Lady Jewel 858-R132				Actual Birth Weight: 70								Polled					
Maternal Grand sire:		LCC Papa Forte H154L				# of Calves/Weaning Ratio: 3/98													
Comments: He should work on heifers. His dam, R132, has a yearling ratio of 102 and a RE ratio of 102.																			
NLC 54W	CED	BW	WW	YW	CEM	Milk	\$EN	%IMF	RE	\$W	\$F	\$G	\$QG	\$YG	\$B	FS	SC	ADG	WDA
DATA		70	551													4.2	36.3	2.83	2.76
RATIOS		87	89																
EPD'S	10	-1.2	42	80	9	16	7.56	0.11	0.43	26.42	22.41	14.86	10.01	4.85	38				

Lot 78		NLC 89W				16519376								Angus					
Sire:		Woodhill Mainline				Birth Date: 3/26/2009								Color: Black					
Dam:		NLC Blackbird J90 MG136				Actual Birth Weight: 76								Polled					
Maternal Grand sire:		Bon View New Design 1407				# of Calves/Weaning Ratio: 3/87													
Comments: 89W's dam, M20, has an ultrasound RE ratio of 101. He should work on heifers.																			
NLC 89W	CED	BW	WW	YW	CEM	Milk	\$EN	%IMF	RE	\$W	\$F	\$G	\$QG	\$YG	\$B	FS	SC	ADG	WDA
DATA		76	579													4.7	37.6	3.02	2.96
RATIOS		94	94																
EPD'S	9	-0.7	44	87	8	17	4.55	0.36	0.39	25.58	28.49	24.12	19.90	4.22	47.94				

Lot 79		NLC 98W				16514976								Angus					
Sire:		Woodhill Mainline				Birth Date: 3/29/2009								Color: Black					
Dam:		NLC Blackbird 41B MG174				Actual Birth Weight: 91								Polled					
Maternal Grand sire:		Connealy KC 5029				# of Calves/Weaning Ratio: 4/101													
Comments: His dam, M91, has a weaning wt ratio of 101 and a %IMF ratio of 116 and should have high carcass quality.																			
NLC 98W	CED	BW	WW	YW	CEM	Milk	\$EN	%IMF	RE	\$W	\$F	\$G	\$QG	\$YG	\$B	FS	SC	ADG	WDA
DATA		91	660													4.8	38.7	3.28	3.33
RATIOS		112	107																
EPD'S	3	2.1	56	93	5	12	7.17	0.27	0.32	27.26	29.83	20.93	16.64	4.29	45.66				

Lot 80		NLC 107W				16514977								Angus					
Sire:		Woodhill Mainline				Birth Date: 3/31/2009								Color: Black					
Dam:		NLC 1407 New Design L41-N10				Actual Birth Weight: 75								Polled					
Maternal Grand sire:		Bon View New Design 1407				# of Calves/Weaning Ratio: 4/108													
Comments: 107W's dam, N10, has a weaning wt ratio of 108 and a %IMF of 130. He should work on heifers.																			
NLC 107W	CED	BW	WW	YW	CEM	Milk	\$EN	%IMF	RE	\$W	\$F	\$G	\$QG	\$YG	\$B	FS	SC	ADG	WDA
DATA		75	611													4.7	36.3	2.86	3.02
RATIOS		93	99																
EPD'S	9	-0.5	47	88	9	21	0.68	0.32	0.42	28.31	28.33	21.77	18.48	3.29	46.40				

Lot 81		912										16351910										Angus			
Sire:		Connealy All Around										Birth Date: 1/11/2009										Color: Black			
Dam:		Wards Merle 293										Actual Birth Weight: 85										Polled			
Maternal Grand sire:		H A R B Cincha 829										# of Calves/Weaning Ratio: 4/107													
Comments: 912's dam has a weaning wt ratio of 107, a yearling ratio of 118, ultrasound %IMF ratio of 102, a RE ratio of 106. His dam as produced very well.																									
912	CED	BW	WW	YW	CEM	Milk	\$EN	%IMF	RE	\$W	\$F	\$G	\$QG	\$YG	\$B	FS	SC	ADG	WDA						
DATA		85	627													5.3	36.1	3.2	2.84						
RATIOS		100	100																						
EPD'S	2	2.8	50	93	6	26	-5.38	0.54	-0.1	25.32	32.16	27.77	25.60	2.17	43.45										

Lot 82		938										16445650										Angus			
Sire:		Connealy All Around										Birth Date: 2/9/2009										Color: Black			
Dam:		Craft Cheyenne 1397-683										Actual Birth Weight: 87										Polled			
Maternal Grand sire:		D B Saint Nick 26										# of Calves/Weaning Ratio: 2/105													
Comments: 938's dam has a 105 weaning wt ratio on 2 calves.																									
938	CED	BW	WW	YW	CEM	Milk	\$EN	%IMF	RE	\$W	\$F	\$G	\$QG	\$YG	\$B	FS	SC	ADG	WDA						
DATA		87	629													5.4	34.1	3.28	2.84						
RATIOS		101	100																						
EPD'S	2	3.1	54	93	6	23	-2.69	0.5	0.03	26.84	30.6	27.73	24.50	3.23	49.08										

Lot 83		927										16443959										Angus			
Sire:		S A V Final Answer 0035										Birth Date: 1/29/2009										Color: Black			
Dam:		Thomas Erica 6555										Actual Birth Weight: 66										Polled			
Maternal Grand sire:		S A V 8180 Traveler 004										# of Calves/Weaning Ratio: 2/102													
Comments: His dam has a weaning wt ratio of 102 on 2 calves. He should work on heifers.																									
927	CED	BW	WW	YW	CEM	Milk	\$EN	%IMF	RE	\$W	\$F	\$G	\$QG	\$YG	\$B	FS	SC	ADG	WDA						
DATA		66	649													4.5	35.5	3.12	2.75						
RATIOS		84	105																						
EPD'S	13	-1.7	55	93	11	20	1.72	0.16	0.07	34.89	30.21	12.26	12.14	0.12	30.93										

Lot 84		954										16438911										Angus			
Sire:		S A V Final Answer 0035										Birth Date: 3/2/2009										Color: Black			
Dam:		Craft Forever Lady E218-633										Actual Birth Weight: 72										Polled			
Maternal Grand sire:		GDAR New Design 4107										# of Calves/Weaning Ratio: 1/111													
Comments: His dam has a 111 weaning wt ratio and an ultrasound RE ratio of 104. He is a twin.																									
954	CED	BW	WW	YW	CEM	Milk	\$EN	%IMF	RE	\$W	\$F	\$G	\$QG	\$YG	\$B	FS	SC	ADG	WDA						
DATA		72	640													4.7	33.8	2.62	2.61						
RATIOS		88	101																						
EPD'S	6	1.7	54	97	6	24	-4.85	0.19	0.3	28.71	34.64	17.14	13.39	3.75	40.27										

Lot 85		953		16446756										Angus						
Sire:		Mytty In Focus				Birth Date:					2/27/2009					Color: Black				
Dam:		NLC Lady Jewel L65-T83				Actual Birth Weight:					73					Polled				
Maternal Grand sire:		H S A F Bando 1961				# of Calves/Weaning Ratio:					1/98									
Comments: Should work on heifers.																				
953	CED	BW	WW	YW	CEM	Milk	\$EN	%IMF	RE	\$W	\$F	\$G	\$QG	\$YG	\$B	FS	SC	ADG	WDA	
DATA		73	620													4.5	35.6	2.87	2.62	
RATIOS		90	98																	
EPD'S	12	-0.8	49	89	11	24	-2.37	0.42	-0.05	30.34	28.55	22.59	22.01	0.58	38.29					

Lot 86		NLC 1W		16515098										Angus						
Sire:		Mytty In Focus				Birth Date:					2/19/2009					Color: Black				
Dam:		NLC Blackbird P50-T65				Actual Birth Weight:					89					Polled				
Maternal Grand sire:		Bon View New Design 208				# of Calves/Weaning Ratio:					1/106									
Comments: 1W's dam, T65, has a weaning wt ratio of 106. He is thick with a smaller frame and would sire some great females.																				
NLC 1W	CED	BW	WW	YW	CEM	Milk	\$EN	%IMF	RE	\$W	\$F	\$G	\$QG	\$YG	\$B	FS	SC	ADG	WDA	
DATA		89	654													4.3	42.2	2.64	2.69	
RATIOS		118	106																	
EPD'S	6	2.2	48	87	6	27	-4.56	0.55	-0.05	27.08	26.96	30.28	25.88	4.4	39.89					

Lot 87		NLC 5W		16515099										Angus						
Sire:		Mytty In Focus				Birth Date:					2/24/2009					Color: Black				
Dam:		Craft 939A Midland M205-T143				Actual Birth Weight:					71					Polled				
Maternal Grand sire:		BT Midland 189R				# of Calves/Weaning Ratio:					1/114									
Comments: T143, did a good job on her 1st calf with a 114 ratio. He should work on heifers.																				
NLC 5W	CED	BW	WW	YW	CEM	Milk	\$EN	%IMF	RE	\$W	\$F	\$G	\$QG	\$YG	\$B	FS	SC	ADG	WDA	
DATA		71	705													4.8	34.4	3.28	3.08	
RATIOS		96	114																	
EPD'S	12	-0.8	56	98	11	24	-5.17	0.48	0.05	32.42	34.87	27.79	23.91	3.88	40.40					

Lot 88		NLC 35W		620653599										Angus						
Sire:		Mytty In Focus				Birth Date:					3/16/2009					Color: Black				
Dam:		NLC Jestress J69-R92				Actual Birth Weight:					88					Polled				
Maternal Grand sire:		Bushs Gravity				# of Calves/Weaning Ratio:					3/106									
Comments: His dam has a weaning wt ratio of 106 and ultrasound ratio of 115 on %IMF and 105 on RE																				
NLC 35W	CED	BW	WW	YW	CEM	Milk	\$EN	%IMF	RE	\$W	\$F	\$G	\$QG	\$YG	\$B	FS	SC	ADG	WDA	
DATA		88	673													4.2	34.5	2.13	2.85	
RATIOS		110	109																	
EPD'S	10.5	-0.25	47	83	9	25	2.36	0.55	0.23	33.81	23.61	32.11	25.68	6.43	47.87					

Lot 89		NLC 36W				16515097								Angus					
Sire:	Mytty In Focus				Birth Date: 3/16/2009								Color: Black						
Dam:	Craft 312 Mccumber 992 831				Actual Birth Weight: 70								Polled						
Maternal Grand sire: Mc Cumber 212 Traveler 992				# of Calves/Weaning Ratio: 4/103															
Comments: His dam, M12, has a weaning wt ratio of 103, a yearling wt ratio of 105, ultrasound % IMF of 120, RE ratio of 107. He should work on heifers.																			
NLC 36W	CED	BW	WW	YW	CEM	Milk	\$EN	%IMF	RE	\$W	\$F	\$G	\$QG	\$YG	\$B	FS	SC	ADG	WDA
DATA		70	680													4.5	39.5	2.84	3.17
RATIOS		86	110																
EPD'S	12	-1.3	48	90	10	28	-6.34	0.46	0.09	30.49	29.93	28.12	23.3	4.82	41.45				

Lot 90		NLC 42W				16515101								Angus					
Sire:	Mytty In Focus				Birth Date: 3/17/2009								Color: Black						
Dam:	NLC Lady Jewel of E02-R101				Actual Birth Weight: 71								Polled						
Maternal Grand sire: Bon View New Design 1407				# of Calves/Weaning Ratio: 3/109															
Comments: 42W's dam, R101, has a weaning wt ratio of 109 on 3 calves. He should work on heifers.																			
NLC 42W	CED	BW	WW	YW	CEM	Milk	\$EN	%IMF	RE	\$W	\$F	\$G	\$QG	\$YG	\$B	FS	SC	ADG	WDA
DATA		71	619													4.5	37.1	2.92	2.94
RATIOS		89	100																
EPD'S	14	-1.4	43	83	13	29	-5.24	0.55	-0.06	29.18	24.94	26.78	25.88	0.9	37.90				

Lot 91		NLC 146W				16512297								Angus					
Sire:	Trinity Rito 112 6314				Birth Date: 4/23/2009								Color: Black						
Dam:	NLC Blackbird L69-P30				Actual Birth Weight: 80								Polled						
Maternal Grand sire: Connealy Lead On				# of Calves/Weaning Ratio: 2/109															
Comments: His dam, P30, has a weaning wt ratio of 109 on 2 calves. Our senior angus herdsire, Trinity Rito 112 6314, is working real well for us and this young calf looks good.																			
NLC 146W	CED	BW	WW	YW	CEM	Milk	\$EN	%IMF	RE	\$W	\$F	\$G	\$QG	\$YG	\$B	FS	SC	ADG	WDA
DATA		80	653													4.8	35.1	3	3.27
RATIOS		99	105																
EPD'S	6	1.4	53	94	6	24	-4.01	0.53	0.08	29.40	31.99	31.77	25.40	6.37	48.41				

Lot 92		NLC 142W				16512296								Angus					
Sire:	Med Rock Emblazon 702 707				Birth Date: 4/19/2009								Color: Black						
Dam:	B&C 081 Bando 701-816 LB				Actual Birth Weight: 79								Polled						
Maternal Grand sire: V D A R Bando 701				# of Calves/Weaning Ratio: 7/106															
Comments: His dam, 081, has a weaning wt ratio of 106 on 7 calves. This calf is sired by our new angus herdsire, Med Rock Emblazon, that we are currently progeny testing and he looks very promising.																			
NLC 142W	CED	BW	WW	YW	CEM	Milk	\$EN	%IMF	RE	\$W	\$F	\$G	\$QG	\$YG	\$B	FS	SC	ADG	WDA
DATA		79	666													4.4	36.4	1.76	2.84
RATIOS		98	108																
EPD'S	6	0.9	42	74	5	24	2.19	0.33	0.09	28.31	16.71	21.25	18.85	2.4	31.60				

MAKE BULL SELECTION AND APPRAISAL EASIER WITH INDEXES

The value indexes developed by the ASA staff can make bull selection much easier. ASA has done the research, put a real world value on each trait, ranked them in their order of importance, utilized and broke them down into dollars and cents. Maternal value or API and terminal value or TI are easy to use numbers for people to use expressed in dollars. Some of the other breeds have indexes as well; however, from a bias standpoint, the Simmental indexes are easier to use and much more concise than the competitive breeds. It seems like they have too many indexes to sort through.

One can make good use of the indexes when you do a preliminary sort when you go through a catalog. Once you decide if you will be retaining replacements or not, you can select bulls on maternal or terminal value or both. If you are looking for terminal sires, rank them by TI value and then look at the individual performance, EPDs, and conformation. The indexes can also be a way to eliminate bulls that look right, but just don't have the genetic merit you are looking for. Furthermore, if two bulls are comparable in performance and conformation, the bull with the higher IT is more valuable to you and the industry.

Assuming the indexes are accurate, which have been studied thoroughly, you can actually access the marginal value of a sire through the value of his offspring. Given the diversity and size of the multi-breed database we have available through ASA, one can make a more accurate appraisal of the value of a bull we purchase. For example, the Simmental and Hybrid breed average for TI is \$62.00. If you buy a bull with a TI of 75, each calf he produces is theoretically \$13.00 more valuable than the calves by a \$62.00 bull. If you spread that over 100 calves (25 calves a year for 4 years), the TI \$75.00 bull will produce \$1300. more value to you and the industry. The same formula applies to the API index. If you are retaining females, it is very important to select bulls with as high an API value as you can afford. Always remember the large impact a herd bull has to your cowherd if you are retaining replacement heifers. Choose the right one.

2010 Hybrid Percentile Table													
%	Birth Wt	Wean Wt	Yrlng Wt	Milk	Maternl Wn Wt	Carcass Wt	Yield Grd	Marblng	Back Fat	Rib-eye Area	WBSF	API (\$)	TI (\$)
1	-4.8	46.6	88.0	14.1	31.8	17.7	-0.16	0.76	-0.02	0.39	-0.18	140	83
2	-4.3	44.2	83.6	12.9	30.0	14.9	-0.13	0.71	-0.01	0.34	-0.17	136	80
3	-4.0	42.7	80.9	12.1	28.9	13.1	-0.11	0.68	-0.01	0.31	-0.17	133	79
4	-3.7	41.5	78.8	11.5	28.0	11.8	-0.10	0.65	-0.01	0.29	-0.16	131	78
5	-3.5	40.6	77.1	11.0	27.3	10.7	-0.09	0.63	0.00	0.27	-0.16	129	77
10	-2.8	37.4	71.3	9.4	25.0	7.0	-0.05	0.56	0.01	0.21	-0.15	124	74
15	-2.4	35.2	67.3	8.3	23.4	4.5	-0.03	0.51	0.01	0.17	-0.14	120	71
20	-2.0	33.5	64.2	7.4	22.1	2.5	-0.01	0.47	0.02	0.13	-0.13	117	70
25	-1.7	32.0	61.5	6.6	21.0	0.8	0.01	0.44	0.02	0.10	-0.13	115	68
30	-1.4	30.7	59.1	6.0	20.0	-0.8	0.03	0.41	0.03	0.08	-0.12	112	67
35	-1.1	29.4	56.9	5.3	19.1	-2.2	0.04	0.39	0.03	0.05	-0.12	110	66
40	-0.8	28.2	54.8	4.7	18.2	-3.6	0.05	0.36	0.03	0.03	-0.12	108	65
45	-0.6	27.1	52.7	4.2	17.4	-4.9	0.07	0.33	0.04	0.01	-0.11	106	63
50	-0.4	26.0	50.7	3.6	16.6	-6.2	0.08	0.31	0.04	-0.01	-0.11	104	62
55	-0.1	24.9	48.7	3.0	15.8	-7.5	0.09	0.29	0.04	-0.03	-0.10	103	61
60	0.1	23.8	46.6	2.4	14.9	-8.8	0.11	0.26	0.05	-0.05	-0.10	101	60
65	0.4	22.6	44.5	1.8	14.1	-10.1	0.12	0.23	0.05	-0.08	-0.10	99	59
70	0.6	21.4	42.3	1.2	13.2	-11.6	0.13	0.21	0.05	-0.10	-0.09	97	58
75	0.9	20.0	39.9	0.5	12.2	-13.1	0.15	0.18	0.06	-0.13	-0.09	94	56
80	1.3	18.5	37.2	-0.2	11.1	-14.8	0.17	0.15	0.06	-0.15	-0.08	92	55
85	1.6	16.8	34.1	-1.1	9.8	-16.8	0.19	0.11	0.07	-0.19	-0.08	89	53
90	2.1	14.6	30.2	-2.2	8.2	-19.3	0.21	0.06	0.07	-0.23	-0.07	85	51
95	2.8	11.4	24.3	-3.9	5.9	-23.1	0.25	-0.01	0.08	-0.29	-0.06	80	48
AVG	-0.4	26.0	50.7	3.6	16.6	-6.2	0.08	0.31	0.04	-0.01	-0.11	104	62